

Glass DC Nebulizers

SeaSpray

1mL/min uptake	A22-1-USS1
400µL/min uptake	A22-1-USS04

MicroMist

400µL/min uptake	A22-1-UM04
200µL/min uptake	A22-1-UM02
100µL/min uptake	A22-1-UM01



DC Nebulizers for HF

OpalMist

400µL/min uptake	A22-1-PFA04
200µL/min uptake	A22-1-PFA02
100µL/min uptake	A22-1-PFA01
50µL/min uptake	A22-1-PFA005



DC Nebulizers for HE-SIS

MicroMist HE

200µL/min uptake	C22-1-UFT02
------------------	-------------



Spray Chambers

Twister

50mL Cyclonic (2.4mm Aux. Port) 90deg Screw Mount	20-809-3854HE
---------------------------------------------------------	---------------



Twister

50mL Cyclonic with Screw Mount	20-809-3892HE
-----------------------------------	---------------



Spray Chambers for HF

Tracey PFA44

44mL Cyclonic	20-809-3713
---------------	-------------



High Efficiency Sample Introduction System

HE-SIS for PerkinElmer NexION 300/350	KT-1204
---------------------------------------	---------



Torches

D-Torch

30-807-0540

Comprises:

Base and Inner Tube	31-808-2847
Quartz Outer Tube	31-808-2848
Retaining Ring	31-808-2818



D-Torch for HF

30-808-2937

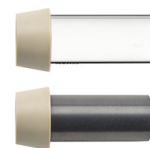
Comprises:

Base and Inner Tube	31-808-2847
Ceramic Outer Tube	31-808-2849
Retaining Ring	31-808-2818



D-Torch Options:

Quartz Outer Tube	31-808-2848
Ceramic Outer Tube	31-808-2849



Torches

(continued)

Quartz Torch

Standard Quartz Torch	30-808-8107
High Efficiency Quartz Torch	31-808-2784



Quartz Injectors (non DRC)

Tapered Quartz Injector 1.5mm	31-807-0006
Tapered Quartz Injector 1.8mm	31-807-0005
Tapered Quartz Injector 2.0mm	31-807-0004



These injectors are compatible with both D-Torch and standard torch. They are suitable for torch adaptor 31-808-2825.

Quartz Injectors (DRC Versions)

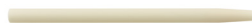
Tapered Quartz Injector with Ball Joint, 0.85mm	31-808-3125
Tapered Quartz Injector with Ball Joint, 1.5mm	31-808-0851
Tapered Quartz Injector with Ball Joint, 2.0mm	31-808-0806
Tapered Quartz Injector with Ball Joint, 2.5mm	31-808-3463



These injectors are compatible with both D-Torch and standard torch. They are suitable for torch adaptor 31-808-2824.

HF Resistant Injectors

Tapered Alumina Injector 2.0mm	31-807-0060
Sapphire Injector 2.0mm	31-808-2803



These injectors are compatible with both D-Torch and standard torch. They are suitable for torch adaptor 31-808-2825.

Torch Adaptor

Cassette Mount Adaptor for Ball Joint Injector	31-808-2824
---------------------------------------------------	-------------

This adaptor is suitable for injectors with a ball joint.



Torch Adaptor

PFA Cassette Mount Adaptor	31-808-2825
----------------------------	-------------

This adaptor is suitable for injectors without a ball joint.



Cones

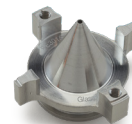
Sampler Cones

Nickel Sampler	PE3011-Ni
Aluminium Sampler	PE3011-Al
Platinum Sampler	PE3013-Pt
Platinum Sampler (18mm)	PE3013A-Pt
Platinum Sampler (12mm)	PE3013C-Pt
Platinum Sampler Boron free	PE3013-Pt-BF



Skimmer Cones

Nickel Skimmer	PE3012-Ni
Aluminium Skimmer	PE3012-Al
Platinum Skimmer	PE3014-Pt
Platinum Skimmer Boron free	PE3014-Pt-BF
Aluminium Hyper Skimmer	PE3015-Al
Nickel Hyper Skimmer	PE3015-Ni
Platinum Hyper Skimmer	PE3015-Pt/Ni



O-ring for NexION Hyper Skimmer Cone (pack of 5)	PE5115
-----------------------------------------------------	--------



Screw for NexION Hyper Skimmer Cone (pack of 2)	PE5116
----------------------------------------------------	--------



ConeGuard Thread Protectors

Sampler Cone Guard For NexION 300/350	70-803-1024
Skimmer Cone Guard For NexION 300/350	70-803-1026



Gasket for Sampler Cone (pack of 5)	PE5111
----------------------------------------	--------



RF Coils

Copper 70-900-2006C



RF Coil Installation Kit 70-900-2006T



Common Accessories

Elegra Argon Humidifier

Elegra Dual Argon Humidifier 70-803-1274



Guardian In-Line Filters

Guardian DC in-line non-return gas filter 70-803-1942

Guardian in-line sample filter 70-803-1108

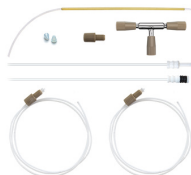
Eluo Adaptor for Inline Filter 70-803-1160



Trident Internal Standard Kits

Trident CT Standard Kit 60-703-1179

Standard Kit for HF solutions 60-808-1150



Magnifier Inspection Tool 70-803-1923



Autosampler Probes (See page 20-21 for complete list of probes)

Suitable for Cetac ASX-200/500/800 Series and PerkinElmer S20 Series

Guardian Probe 0.75mm
Probe Connecting Line (Red) 70-803-1803

*(suitable for Cetac only)



Guardian Probe 0.75mm
Probe Connecting Line (Red) 70-803-2097

*(suitable for PerkinElmer S20 Series only)



Polyimide sheathed Autosampler
Probe 0.5mm ID 60-808-1186L

PTFE Encapsulated Carbon Fibre
Probe 0.5mm ID 70-803-0784

PTFE Encapsulated Carbon Fibre
Probe 0.75mm ID 70-803-1443

PTFE Encapsulated Carbon Fibre
Probe 1.0mm ID 70-803-0793



Suitable for PE S10 or AS93+

PTFE Encapsulated Carbon
Fibre Probe 0.25mm ID 70-803-1071

PTFE Encapsulated Carbon
Fibre Probe 0.5mm ID 70-803-1440

PTFE Encapsulated Carbon
Fibre Probe 1.0mm ID 70-803-0816

